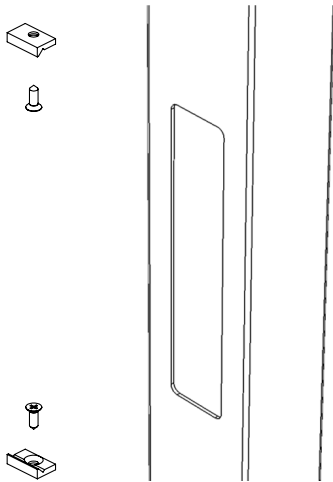
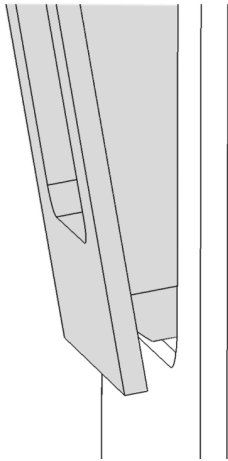


1. Route out hole in the centre of the door stile Screw in timber fixing catches.



Hole Sizes	
Flush Handle	Hole Size
FP125	20x105
FP150	33x144
FP170	33x164
FP200	33x194

2. Push bottom of handle in first to ensure handle locates in catch.



3. Swing handle into place, then tighten grub screw.

